

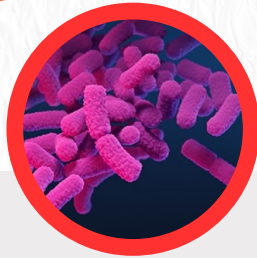
**\$130M
ESTIMATED
ATTRIBUTABLE
HEALTHCARE
COSTS IN 2017**

**13,100
ESTIMATED
CASES IN
HOSPITALIZED
PATIENTS IN
2017**

**1,100
ESTIMATED
DEATHS**

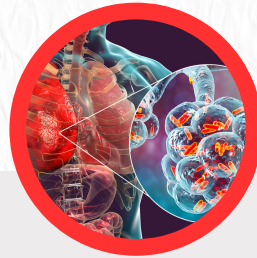
CRE

CARBAPENEM- RESISTANT ENTEROBACTERIALES



WHAT IS CRE

A family of organisms that are **difficult** to treat due to high levels of resistance to carbapenem antibiotics. With high rates of morbidity and mortality, it is classified by the CDC as an **urgent threat**.



TRANSMISSION

CRE can cause infections in the blood, lungs, wounds, and bladder through contact with another person or device that is colonized or infected with CRE.



PREVENTION

- ➔ Use **Contact Isolation** with the **Visitor Precaution Sign**
- ➔ **Hand Hygiene** following exposure to the patient's immediate environment, especially when cleaning up stool or changing wound dressings.
- ➔ **Assess Daily** the need for devices such as urinary catheters and central lines

**FOR QUESTIONS, PLEASE CONTACT YOUR
LOCAL INFECTION PREVENTIONIST**